



Grand Arrival Court – ITC Gardenia, Bengaluru

ITC Gardenia, Bengaluru

ITC Gardenia, Asia's first LEED® Platinum green hotel embodies the splendours of Nature. Built as a tribute to the beautiful city of Bengaluru, the hotel takes its inspiration from the magnificent gardens of the city. Envisioned as a building set in a garden, both the interiors and exteriors of ITC Gardenia merge with each other and blend with the architectural aesthetics and landscaping sensibilities of the surroundings.

The ethos of ITC Gardenia is 'Forward to Green, Back to Nature'. Forward to Green highlights eco-friendly practices such as Energy Efficiency, Zero Solid Waste Management, Green Banqueting and more.

Natural lighting illuminates the wind-cooled Atrium lobby with its vertical hanging gardens that lead to the central court. Here amidst verdant gardens and recycled water bodies stands the gracious multi-columned Lotus Pavilion, inspired by Tipu Sultan's palace at Srirangapatna, a touch of heritage for today's global traveller.

Kaya Kalp – The Spa offers a unique array of body and mind therapies from all over the world to rejuvenate one's senses in style.





Location

Conveniently situated in the commercial heart of Bengaluru, ITC Gardenia is close to the key business districts and IT Hubs of the city, and is surrounded by verdant gardens, parks, palaces, temples and shopping malls that call this historic and vibrant city home.

- 35 km from the airport
- 3 km from the closest railway station
- 2 km from the city centre

Accommodation

Tower Rooms

These delightful spaces offer glimpses of the exquisite outdoors while providing an enchanting style statement within.

EVA Rooms

An exclusive wing dedicated to the specific needs of the lady traveller. It addresses the need for utmost security for our lady guests.

ITC ONE

Celebrate the 'Power of Space' in this exclusive wing where the rooms are furnished with state-of-the-art facilities. A personal butler anticipates the guests' every need.



ITC One – ITC Gardenia, Bengaluru

ITC ONE Suites and Towers Suites

These spacious rooms measuring around 65 m² are each an oasis of indulgence, facilitated by a range of state-of-the-art amenities and warm, efficient services, perfect for corporate heads and business leaders.

Flamingo Suite

Also called the Long Stay Suite, the Flamingo Suite is equipped with state-of-the-art amenities and offers our distinguished guests access to superlative business and recreational facilities and services for a stay that is truly remarkable.

Pelican Suite

Inspired by the elegant Pelican, the sprawling Queen Suite is spread across 153 m², a floor below the grand Peacock Suite. Lavishly appointed and overlooking the aquamarine open-air swimming pool, the garden courtyard and the island restaurant Lotus Pavilion through its large bay windows, the Pelican Suite is done up in refreshing shades of sienna and burnt orange, for a relaxing and cheerful ambience.



Pelican Suite – Bed Room, ITC Gardenia, Bengaluru

Peacock Suite

One of the country's largest presidential rooms, the Peacock Suite is spread across 468 m². Nestled in the top two floors of the hotel, the suite offers a breathtaking view of the city. Open, landscaped courtyards add to the elegance. This split level suite houses an exclusive and private infinity pool set in a large terrace. The bathroom is custom commissioned in every detail with white marble and special inlaid mirror pieces that form the 'Tree of Life'.



Peacock Suite – Master Bedroom, ITC Gardenia, Bengaluru

Dining

■ Cubbon Pavilion

ITC Gardenia's sky-lit 24-hour fine dining restaurant offers a delectable spread of Indian and inventive international cuisine, Cubbon Pavilion is the ideal place for round-the-clock dining in Bengaluru, in a cheerful ambience.



Cubbon Pavilion – ITC Gardenia, Bengaluru

Named after Cubbon Park – the green lung of the city, a sprawling 1.21 sq km park with thousands of species of flora, some rare and exotic, Cubbon Pavilion features ITC Gardenia's most remarkable feature – the vertical garden, comes together seamlessly with the glass, marble, steel and wood adorned elegance of the restaurant to create an environment that is soothing, cheerful and infused with the freshness of nature.

Enjoy elaborate breakfast, lunch and dinner buffets through the week, with an extensive choice of soups, salads, kebabs and main courses from multiple cuisines with a delicious selection of gourmet desserts.

Cubbon Pavilion also features a multi-cuisine a-la-carte menu, for an anytime dining experience that is truly special.

Hours: 24 Hrs

■ Lotus Pavilion

Framed by the wind-cooled lobby of the hotel, the first sight to greet any visitor, and marking the central axis around which the hotel is built, the Lotus Pavilion is a celebration of all that ITC Gardenia stands for. The best of nature in an environment that expresses the best of human endeavour.

Open to the elements and surrounded by water on all sides, with a garden sloping gently down its roof, Lotus Pavilion captures the spirit of Tipu Sultan's summer palace.

It offers the perfect setting for basking in Bengaluru's fabulous weather. The ideal sit-out restaurant – any time of the year, you can enjoy a hand crafted beer or choose from our fine line-up of beverages from around the world, with a selection of gourmet tapas and hors d'oeuvres from our carefully crafted menu.

Hours: 0700 Hrs to 0200 Hrs

■ West View - The Grill Room

One of Bengaluru's best international restaurants, West View – The Grill Room offers the finest and freshest cuts of meats, poultry, seafood and vegetables, served in classic Western styles.

A restaurant that celebrates fresh, seasonal produce from around the world that are crafted with care and expertise to accentuate their natural flavours, West View offers a fresh new menu every day of the week.

From the 'amuse-bouches' to the simmering Soup Tureen, on to the Cold Table where marinated and cured meats, slow-roasted vegetables and artisanal cheeses are laid out in an elaborate feast for the senses as a prelude to the main event – The Grill, where expertly marinated seafood, fish, meats and vegetables await your selection, and are grilled to perfection while you dine. The Girls at the Grill – an all-lady crew of service associates and on-site chefs, look forward to taking you through this experience.

An extensive wine library offers elegant pairing choices for every course, while the Pudding Club, a heart-warmingly indulgent selection of puddings and desserts creates the perfect note on which to conclude your meal.

Live music promises to add to your dining experience at West View – The Grill Room.

Open for Dinner: 1900 Hrs to 2330 Hrs

Dress Code: Formals/Smart Casuals

Note: We welcome children above the age of 12 years.



West View-The Grill Room – ITC Gardenia, Bengaluru

K & K - Kebabs & Kurries

The cuisine of India as we know it today has evolved from influences traceable to royal courts and humble kitchens, travellers and explorers, conquerors and artists over thousands of years, from across the length and breadth of the country, to express a refined and varied collection of styles and tastes.

Presenting a superlative menu of Indian delicacies cooked to perfection in myriad ways – in sealed deghs and copper handis, in clay and iron tandoors, and on anethis and tawas, the delectable array of vegetarian and non-vegetarian kebabs and curried dishes at K & K - Kebabs & Kurries straddles the many culinary legacies of India.



K & K - Kebabs & Kurries – ITC Gardenia, Bengaluru

Partake of the finest Indian culinary experience in Bengaluru with this award winning cuisine in the warm, inviting interiors of K & K - Kebabs & Kurries, for a taste of ITC Hotels' finest signature dishes.

Lunch: 1230 Hrs to 1445 Hrs

Dinner: 1900 Hrs to 2330 Hrs

Dress Code: Formals/Smart Casuals

Note: We welcome children above the age of 12 years.

EDO Japanese Restaurant and Bar

The name EDO (pronounced Yedo, meaning estuary in Japanese), is inspired by the ancient name of the city of Tokyo.

It was during the EDO period that Japan first saw an exuberant popularisation of art, music, theatre and literature in joyous pursuit of an ideal world. EDO at the ITC Gardenia is a celebration of this very spirit.

EDO brings alive the concept of Japan's vibrant after hours culture, with authentic sushi, sashimi, succulent robatayaki, crisp tempura and artful bento meals, accompanied by fine Japanese sake, wines and whiskies, culminating in a grand finale of delectable desserts.



Edo – Japanese Restaurant and Bar, ITC Gardenia, Bengaluru

This 81-seater Japanese, resto-bar celebrates the revival of the spirit of the EDO period with the culinary indulgence of a style of dining that is a popular trend in present-day Tokyo. Deviating from the traditionally dominating Kaiseki style of dining, it promises to bring alive fun rituals that engage and enthrall guests, in a relaxed ambience.

Open for Dinner : 1830 Hrs to 2330 Hrs

Dress Code: Formals/Smart Casuals

Note: We welcome children above the age of 12 years.

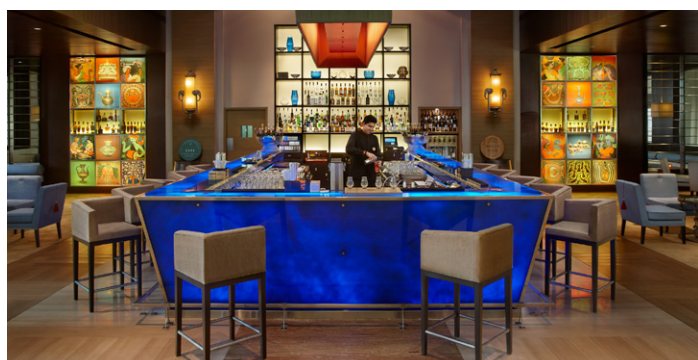
Highland Nectar

ITC Gardenia's swanky whiskey bar, Highland Nectar features an elegant island bar at the centre of the restaurant where one can watch our resident mixologists and bartends stylishly put together an array of drinks, mixes, cocktails and whiskey trails, for your imbibing pleasure.

Featuring Bengaluru's finest and most comprehensive selection of blends and single malts from across the world, Highland Nectar focuses on offering guests a matchless experience of its exquisite collection of whiskeys.

An elegant library and a collection of carefully curated artefacts articulate the history of whiskey.

Hours: 1500 Hrs to 2330 Hrs



Highland Nectar – Lobby Bar, ITC Gardenia, Bengaluru

Wellness & Leisure

Kaya Kalp – The Royal Spa

Indulge in a unique array of body and mind therapies and beauty treatments from all over the world to rejuvenate the senses in style.

Banquet & Conference Facilities

ITC Gardenia provides an immense choice of Banquet Halls and Meeting Rooms that present a memorable Green Banqueting experience, preserving resources while offering the utmost excellence in service. There are nine function rooms, with a total of 1813 m² of meeting space. The Mysore Hall is the largest pillarless hall in Bengaluru: elegant, refined and evocatively designed, and lends itself to being divided into three separate spaces. Botania is the largest outdoor meeting space, ideal for stylish weddings or unique corporate events. The Magnolia Room can be used for informal or formal gatherings, while The Plumeria meeting room can be split into two separate Meeting Rooms. The Cassia is a state-of-the-art Boardroom with an interactive whiteboard and video conferencing facilities. The Jacaranda is a 14-seat Boardroom and as in the case of all the meeting spaces, captures the vitality of Bengaluru.



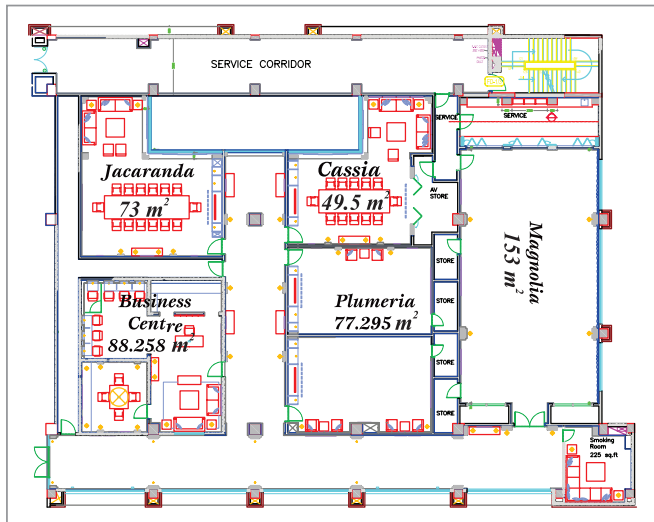
Mysore Hall – Cluster Setup, ITC Gardenia, Bengaluru

Banquet Dimensions and Capacities

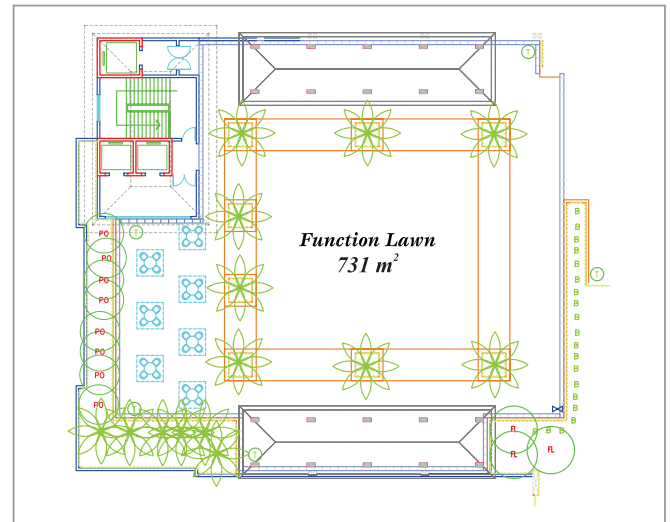
	Mysore Hall	Mysore Hall 2 Parts	Mysore Hall 1 Part	The Magnolia	The Cassia	The Jacaranda	Botania (The Terrace Gardens)
Dimensions in metre	16.7x33x4.8	16.7x22x4.8	16.7x11x4.8	16.7x9.1x3.6			
Area in m ²	546 m ²	364 m ²	182 m ²	153 m ²	49.5 m ²	73 m ²	731 m ²
m ² (Hall Prefunction)	+	+	+	+			
	176.5 m ²	121 m ²	59 m ²				
Reception	650	360	150	120	—	—	250
Buffet							
Sit-down	170	120	60	45	—	—	125
Theatre	500	300	100	110	—	—	200
Classroom	210	140	70	50	—	—	—
U shape	84	64	40	36	12	14	—
Hollow							
Rectangle	88	68	44	40	—	—	—
Cluster round tables	150	100	50	40	—	—	125

Banquet & Conference Floor Plan

Magnolia, Plumeria, Cassia & Jacaranda



Botania - The Terrace Garden



The Mysore Hall

